



Floating Car Data

Nicolas Talpe – BU Director – nicolas.talpe@be-mobile.com

OUR MISSION: GIVE DRIVERS, PUBLIC AUTHORITIES AND COMPANIES CONTROL OVER THEIR MOBILITY

Maximizing the possibilities of big data and connected cars & travelers



Power of connected vehicles and travellers



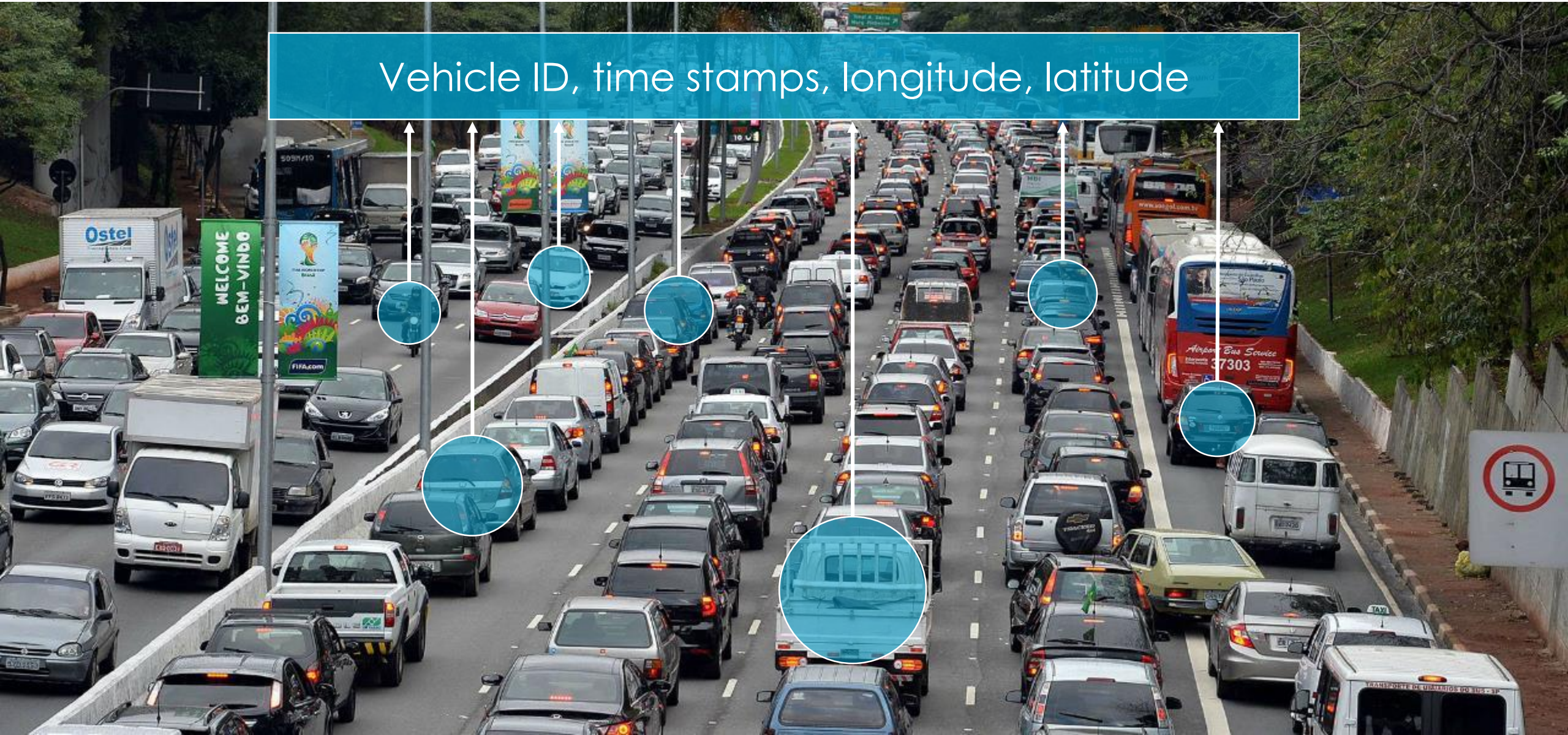
Disruptive data collection & traffic control



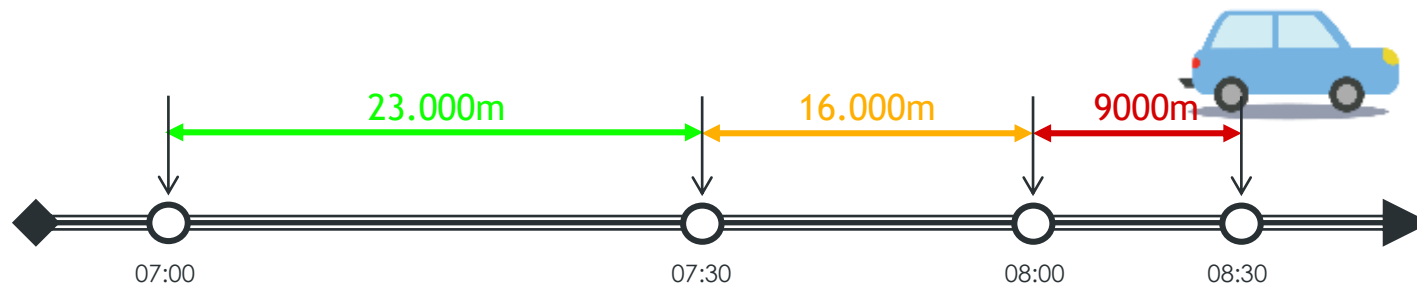
Fuse with traditional fixed infrastructure for monitoring & control

FLOATING CAR DATA

Vehicle ID, time stamps, longitude, latitude



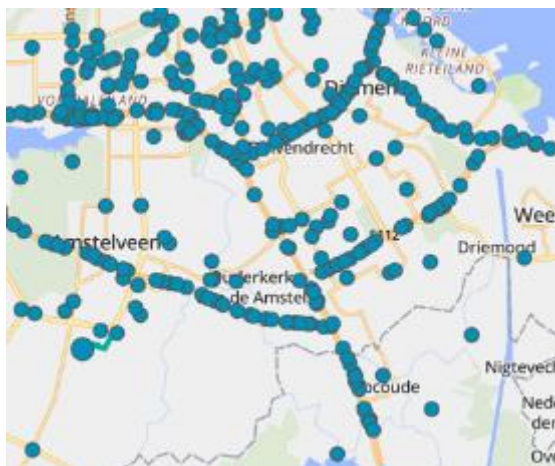
A REVOLUTION IN COLLECTING FLOW DATA



Step 1 We get live positions from vehicles with GPS tracking every minute

Step 2 We match the positions on a digital map and calculate the driven route

Step 3 All vehicle routes are aggregated into one traffic flow layer on the total road network



The car as a traffic sensor has become mature over the past years. Floating Car Data is a trusted source.

Evolution

Smart Road operators

FCD usages to display travel time information to road users



Smart Events

Temporary traffic management to use FCD on VMS-signs



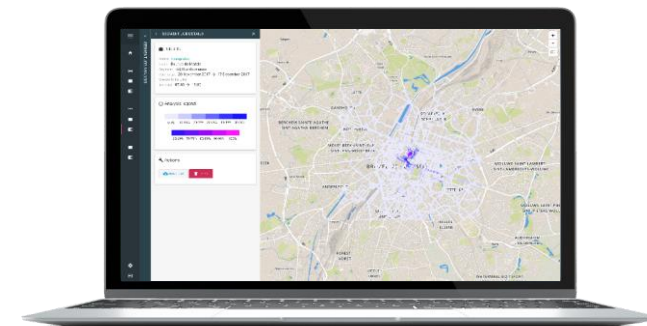
Smart Cities

Permanent smart city VMS-signs to display travel times

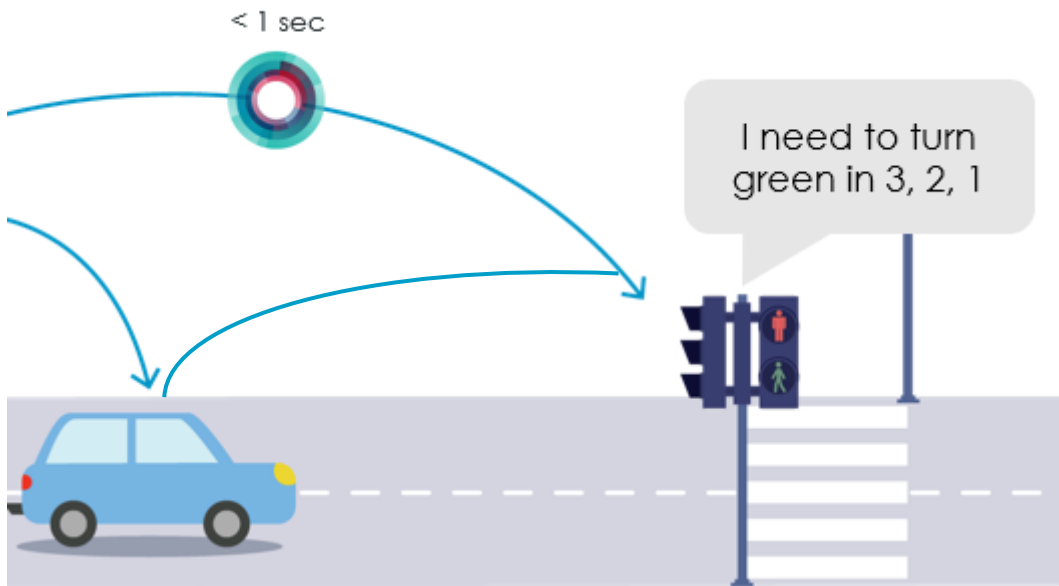


Historical insights

Do-it-yourself tooling to analyse mobility data based on FCD



Next steps include traffic light detection & lane speed signs



Traffic Light detection



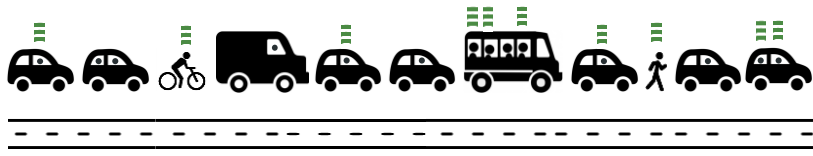
Rijstrooksignalisatieborden

This, by keeping in mind the strenghts of each data souce

Virtual data sources

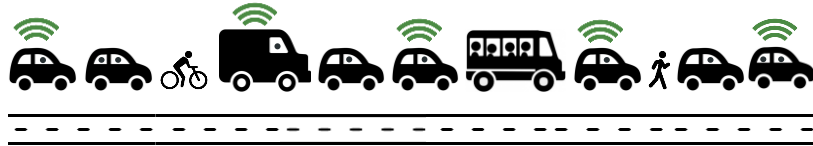
Telco data:

Location insights & macro-movement of SIM-cards,...



Floating Car Data:

Travel times, Origin-Destination, route matrix,...



Tolling Data from ViaPass:

Trucks travel times, number of vehicles, parking



Data from asset sources

Trajects (ANPR cameras, Bluetooth)

Enforcement, counting

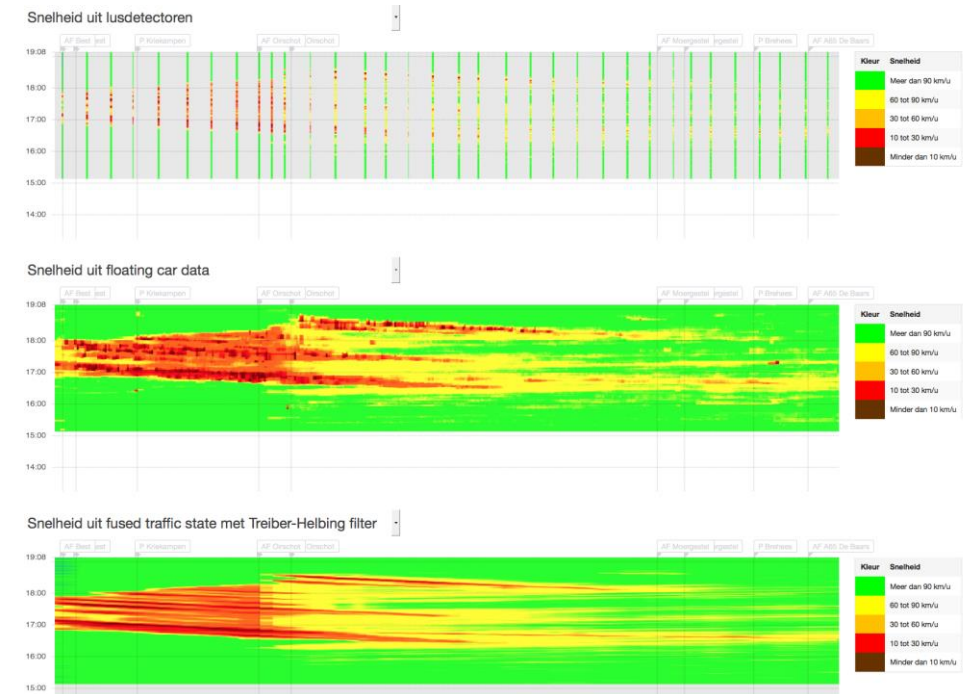
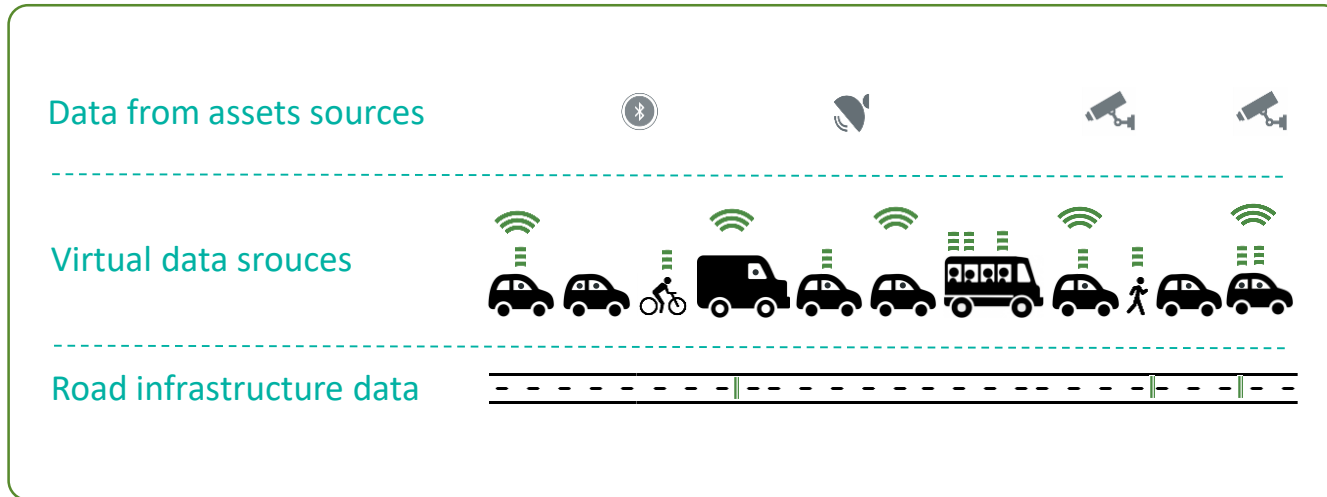


Locations (Induction loops, Radar, PIR, Parking)

Counting, vehicle classification (+16), speed, parking zones, individual parking spots,...



and applying advanced data fusion between virtual data sources and/or in combination with data from assets





BEMOBILE

info@be-mobile.com | www.be-mobile.com