
Data needs & solutions for cyclists



bike to work
BY FIETSERBOND

Mikaël Van Eeckhoudt
CEO Fietsersbond

Need for reshared public space

More people cycling more often on more diverse bikes

- Increased demand for high quality and safe cycling routes
- Need for reshared public space to welcome this bigger group of various active road users
- Cycling routes must be future proof (more will come)

→ data are needed to determine what to do and where

—
Do we need (more) data?

We all have a smartphone, don't we?

Can't we simply ask Google?

The road authorities monitor everything!

So much hassle for cycling infrastructure?

—

Yes we need (more) data because we don't know

- **cyclists' behaviour:** how many, when, where (where not?)
- **cycling infrastructure:** where, how good (or bad), what's missing?
- **cycling investments:** who, how much, when, where

**OK, now we know
that we need more data...**

**... which data do we need?
(and how to collect them?)**



Which data?

Cyclists

- typology, type of bikes
- how much are they
- their behaviour (especially at crossings)
- their needs

Infrastructure

- Where: cycling routes (existing, desired)
- How: state of infrastructure (good, bad, waymarked)

be selective!



The ideal data flow

- **register** with counting infra, people, IT (smartphones, app's)
- **compile** data in datasets, make them **open** data and provide them in data **lakes**
- **analyse, compare** data
- **make recommendations**
- **adapt policy and infrastructure**

—
We know that there is a need here



**WETSTRAAT KRIJGT
EEN NIEUW FIETSPAD**

Fietzersbond's solutions

Meetfiets

(measuring bike)

How good or bad is the infrastructure

Bike to Work's

- + *Fietsrouteplanner*
- + *Route Tracker*



**bike to
work**
BY FIETZERSBOND

e-Platform for cycling data

Where are the black spots (and how to solve them)?

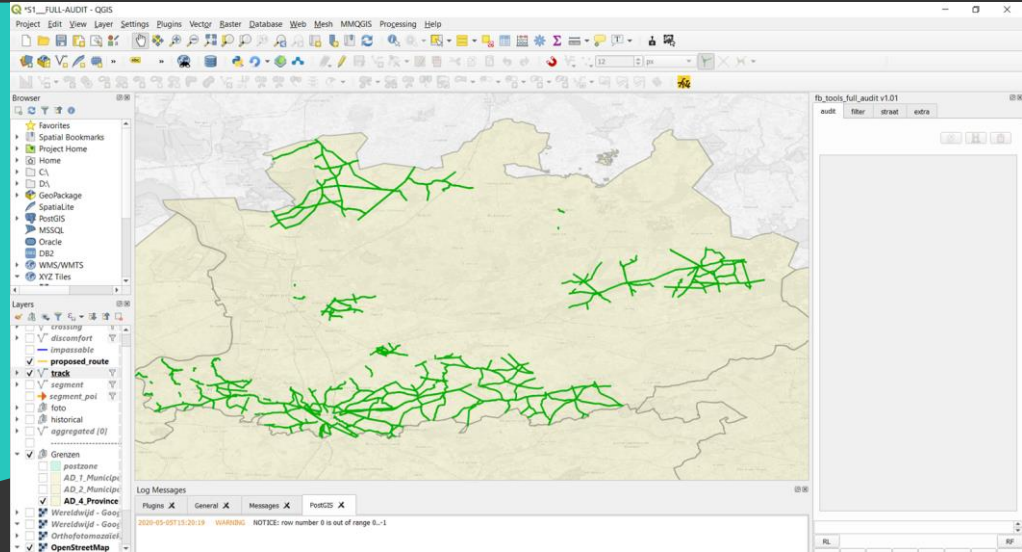
Fietzersbond's solutions

Meetfiets (measuring bike)

- Measures the quality of cycling infrastructure (vibrations)
- Collects up to 45 parameters of cycling infrastructure (width, height differences, road signs, type of surface/covering, road type...)
- data are collected in a database, cleaned up, put at the disposal of our customers
- data accessible (for customers only) in GIS-software

Fietzersbond's solutions

Meetfiets (measuring bike)



Fietzersbond's solutions

Route advice

- Fietsrouteplanner
- 3 types of routes



bike to work
BY FIETZERSBOND



LATEST NEWS

Find your best cycling route to work in 3 steps

On www.biketowork.be you will find the best cycling route to work. From now on you can choose from three route profiles: the commuter route, the fastest route and the safe route.

[READ MORE](#)

Create a new route

If you use a route in both directions, you don't need to create separate routes. Instead, you can add it twice in one day to your calendar.

RIDE 1

Which route profile do you want to use?

Commute
 Fastest
 Safe

Bike
 Public transport
 Walking, jogging
 Scooter, wheelchair, scooter

Car, motorcycle, scooter

Define start and end point of your ride

Search

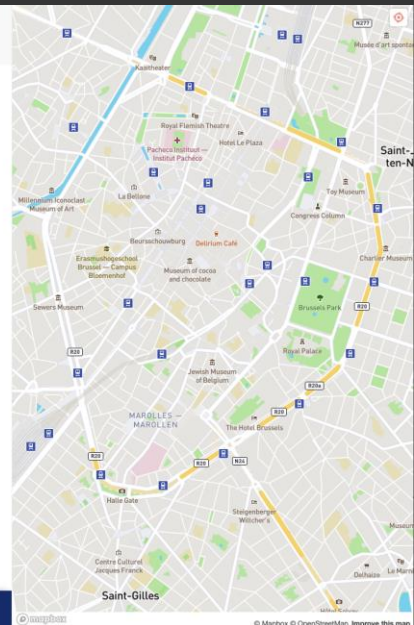
Search

Delete this ride

+

Add ride

SAVE YOUR ROUTE

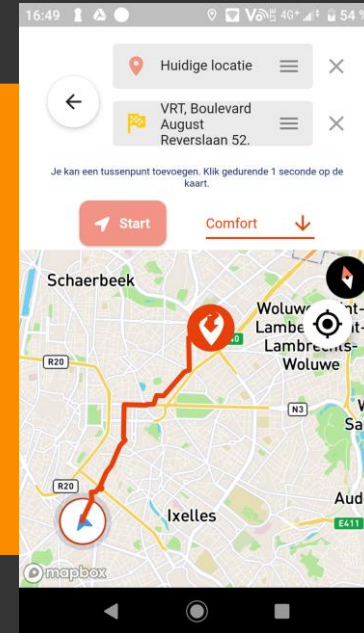
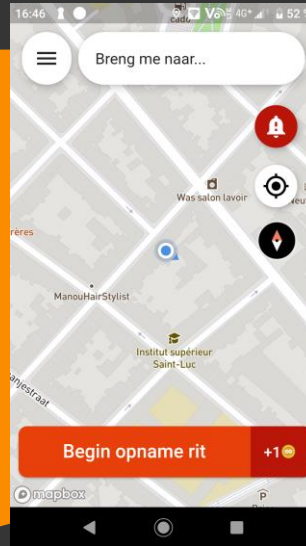


© Mapbox © OpenStreetMap Improve this map

Fietzersbond's solutions

Bike to Work's

Route tracker (via app)



Fietzersbond's solutions

e-Platform for cycling data

- register data coherently
- layered map
- each dataset = layer
- cross datasets
- first for internal use

PROBLEEM REGISTREREN

Bewaar

Postcode

Straatnaam

Wegbeheerder

Probleem

Probleem sub

Opmerking probleem / suggestie aanpak probleem.

Info hoofd en bijcat.

What's next?

- **Meetfiets**
 - keep on research & development (app on bike, database, connections with GIS-software)
- **Bike to Work (website + app)**
 - release app (2020)
 - improve cycling route advice → where to cycle
 - improve tracking → heatmaps
 - improve user's input → collect cycling data
- **e-Platform for cycling data**
 - release platform (2020)
 - add layers and compatibility with other datasets

Fietzersbond & Partners

We are constantly looking for partners to develop cycling data solutions.

Will you help us to answer the data needs?

They already trust us



Info & contact

Mikaël Van Eeckhoudt
CEO Fietsersbond

info@fietsersbond.be
0485 561 541

www.fietsersbond.be
www.biketowork.be
